



ADMINISTRATIVE REPORT

DATE: JUNE 9, 2016

TO: MAYOR AND CITY COUNCIL
BEN REYES, CITY ATTORNEY

FROM: MICHELLE FITZER, CITY MANAGER

PLACES TO BE

Date and Time	Event	Location
Monday, June 13, 2016 7:00 pm	Planning Commission Meeting	City Council Chamber 2131 Pear Street
Wednesday, June 15, 2016 7:00 p.m.	TAPS Committee Meeting	City Council Chamber 2131 Pear Street
Tuesday, June 21, 2016 6:00 pm	City Council Meeting	City Council Chamber 2131 Pear Street
Monday, June 27, 2016 7:00 pm	Planning Commission Meeting	City Council Chamber 2131 Pear Street

- **A TOAST TO YOUTH – JUNE 25TH**

The best way to enjoy local flavors and support an amazing fund raiser is to attend A Toast to Youth (formerly, Celebration of Wine Tasting). The event will be held at the Pinole Senior Center on Saturday, June 25th from 4:00 - 8:00 pm. Tickets are \$20 before May 25th and \$25 after. Tickets are available at the Pinole Youth Center—635 Tennent Avenue, Pinole Senior Center—2500 Charles Avenue, and AToastToYouth.eventbrite.com.

This event will include tasting tables from local wineries including Four Fools, Rosenblum, Boissette Wine Living at Home and more. A Toast to Youth features live music, chocolate and cheese pairing as well as food samples from local Pinole eateries.

For additional information, contact Rochelle at 510-724-9062 or Recreation@ci.pinole.ca.us.

ITEMS OF INTEREST

- **PRESIDENTIAL HOPEFUL BERNIE SANDERS STOPS BY PINOLE**

Bernie Sanders and his entourage made an unexpected stop at the Pinole In-N-Out Burger on Fitzgerald Drive on Friday, June 3rd.



- **ASSEMBLYMEMBER TONY THURMOND OFFICE HOURS**

Assembly 15th District Representative Tony Thurmond will be available to meet with constituents from 12:30 pm to 4:30 pm between June 22nd and October 26th. Please call (510) 286-1400 to set up an appointment. (See attached Flyer)

- **SALES TAX UPDATE**

Attached is the Sales Tax update from our Consultants, HdL. The update reflects the period of October through December 2015 Overall, our sales tax was up 3.4% compared to the same time period last year. We are out performing the averages for both Contra Costa County and the State of California. Continue to shop local – it really makes a difference!

- **CONTRA COSTA COUNTY FISH AND WILDLIFE COMMITTEE**

The Contra Costa County Internal Operations Committee of the Board of Supervisors is now accepting applications from individuals to fill one (1) At-large Alternate member seat on the Contra Costa County Fish and Wildlife Committee. Applications are due by July 1, 2016 at 5:00 P.M.

The Fish and Wildlife Committee has ten members: five District representatives nominated by individual members of the Board of Supervisors, four At-large positions and one Alternate At-large position nominated by the Internal Operations Committee.

For more information regarding the Fish and Wildlife Committee, please visit the Committee's website at: <http://www.co.contra-costa.ca.us/4317/Fish-Wildlife-Committee-FWC>. A fillable application is available on the website and also attached to this email for your convenience.

Applicants must be a resident of Contra Costa County and submit an application by July 1, 2016 at 5:00 P.M. to the Clerk of the Board:

The Internal Operations Committee will review applications and interviews will be scheduled in July. If you have any questions please contact Maureen Parkes, staff to the Fish and Wildlife Committee, directly by phone at 925-674-7831 or email at maureen.parkes@dcd.cccounty.us.

- **NEW FORMAT FOR NATIONAL NIGHT OUT IN AUGUST**

The Pinole Police Department will be changing its National Night Out format this year to coincide with the National Night Out mission of bringing neighborhoods together. Instead of having a police caravan travel to several, separate events throughout the City, we will have **ONE EVENT** at **ONE LOCATION**. The goal of this new format is to build friendships and partnerships with the City's neighborhoods and create a more sense of overall community.

Another added benefit to this new format will be our ability to address the other mission of National Night Out and that is to increase the public's awareness of police programs and resources. So bring your food, invite your friends and come join us at Fernandez Park on August 2nd, where we can celebrate together as one community. Please see attached flyer for more information.

- **STATE REVOLVING LOAN FOR WPCP UPDATE**

On June 7th the City received the Installment Sale Agreement from the State which was signed by the City Manager on June 8th. The agreement reflects the terms and conditions of the low interest loan from the State Revolving Loan Program for the improvements at the Wastewater Pollution Control Plant. The City can now request reimbursement for prior pre-design costs.

- **SAN FRANCISCO BAY TRAIL: PINOLE SHORES TO BAYFRONT PARK**

The East Bay Regional Park District plans to construct a section of the San Francisco Bay Trail in Pinole between Pinole Shores and Bayfront Park, a distance of approximately 0.5 mile. The proposed project would extend a paved trail from a hillside bluff across from Hazel Lane in Pinole Shores east over the UPRR tracks to connect to an existing path in Bayfront Park. The alignment would travel between the UPRR and BNSF railroad tracks for approximately 1,500 feet, then sweep north and east on a 140-foot radius curve with an elevated structure of approximately 1,100-feet in length to cross over the UPRR tracks.

The District made a presentation to the Pinole City Council on June 7th. They stated that construction is scheduled to begin in Spring 2017.



- **I-80 ROAD CLOSURES - JUNE 18TH – 19TH**

The Contra Costa Transportation Authority (CCTA), the California Department of Transportation (Caltrans), the Metropolitan Transportation Commission, and the City of San Pablo recently broke ground on an interchange improvement project on Interstate 80 at San Pablo Dam Road. To facilitate the next phase of work, a section of the freeway must temporarily be closed in order to help ensure public and motorist safety.

What to Expect:

- Interstate 80 will be temporarily closed in the eastbound and westbound directions between San Pablo Avenue and San Pablo Dam Road
- The closure will occur from Saturday, June 18th at 11:00 p.m. until 7:00 a.m. Sunday, June 19th
- Temporary detours will be in effect (please see the attached detour maps)
- Motorists should follow the instructions posted on all on-site signage

- **PG&E STREET LIGHT REPLACEMENT PROJECT IS IN FULL SWING**

PG&E commenced replacing high pressure sodium street lights with energy saving LEDs on May 26th. PG&E has been replacing approximately 125 fixtures per day and may finish in Pinole as early as June 10th. The City will save over \$13,000 annually in energy costs.

- **EMERGENCY REPAIRS ON SAN PABLO AVENUE**

There was a fuel spill on June 2nd on San Pablo Avenue near Rogers. The pavement was badly damaged forcing the road to be closed. The City called in paving contractor Interstate Grading and Paving to help repair the pavement. Interstate Grading and Paving quickly mobilized equipment and material, and the road was repaired and reopened on June 6th.

- **COMMUNITY PLAYHOUSE PRODUCTION – LEGALLY BLONDE**

The Teen/College Company will produce the Broadway musical *Legally Blonde* in July. An international award-winning musical based on the adored movie, *Legally Blonde The Musical*.

High school and College students are welcome to participate in an open casting call on Monday, June 20th. All members of the workshop will become members of the cast.

Performances:

Friday, July 22 at 8:00 p.m.
Sunday, July 24 at 2:00 p.m.

Saturday, July 23 at 2:00 p.m. and 8:00 p.m.

Interested parties can call (510) 724-9844 with any questions.

- **CURRENT BUILDING PERMIT ACTIVITY**

Below is a brief summary of the City's building permit activity for the past thirteen months.

Month	Number of Building Permits	Value
May 2016	76	\$1,253,780
April 2016	80	\$10,736,830
March 2016	62	\$613,059
February 2016	57	\$964,320
January 2016	51	\$837,264
December 2015	47	\$723,177
November 2015	49	\$439,436
October 2015	67	\$885,659
September 2015	64	\$908,516
August 2015	74	\$853,804
July 2015	93	\$873,305
June 2015	138	\$632,485
May 2015	41	\$615,692

Source: Development Services Department June 1, 2016

-END-

WINE TASTING FUNDRAISER

A graphic featuring a row of stylized wine bottles in the background. In the foreground, there are two clusters of grapes, one on the left and one on the right, each with a wine glass. The entire graphic is set against a background of purple and pink watercolor splatters.

A TOAST TO YOUTH

PINOLE YOUTH FOUNDATION

SATURDAY • JUNE 25 • 4-8PM

**PINOLE SENIOR CENTER
2500 CHARLES AVE, PINOLE CA**

\$20 PER PERSON BEFORE MAY 25 • \$25 AFTER

TICKETS AT SENIOR CENTER • OR • ATOASTTOYOUTH.EVENTBRITE.COM

Q4 2015



City of Pinole Sales Tax *Update*

First Quarter Receipts for Fourth Quarter Sales (October - December 2015)

Pinole In Brief

Pinole's receipts from October through December were 3.4% above the fourth sales period in 2014.

The increase in general retail holiday sales surpassed regional trends and contributed the largest share of the overall gain in gross receipts. Recent openings added to already positive results in the restaurants and hotels group.

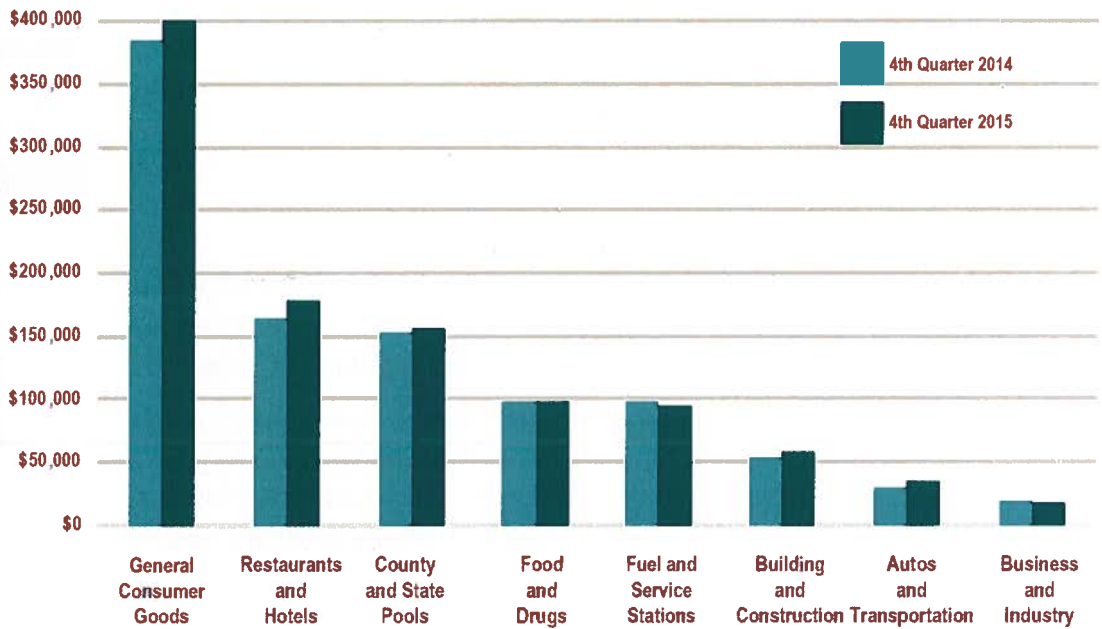
Building and construction and auto-related returns were also up.

Lower fuel prices accounted for the loss in service stations while revenues declined in business to business sectors as a whole.

Receipts from the City's transactions tax, Measure S was 4.1% higher than a year ago.

Net of aberrations, taxable sales for all of Contra Costa County grew 2.3% over the comparable time period; the Bay Area was up 3.6%.

SALES TAX BY MAJOR BUSINESS GROUP



TOP 25 PRODUCERS

IN ALPHABETICAL ORDER

Applebees	Petsmart
Best Buy	Pinole Chevron
BevMo	Pinole Valley Arco
Burlington Coat Factory	Pinole Vista Shell
Dolans Pinole Lumber	Safeway
Food Maxx	Sugar City Building Materials
In N Out Burgers	Target
Kmart	TJ Maxx
Michaels	Toys R Us
Orchard Supply Hardware	Trader Joes
O'Reilly Auto Parts	Ulta
Original Mels Diner	Valero
	Walgreens

REVENUE COMPARISON

Three Quarters – Fiscal Year To Date

	2014-15	2015-16
Point-of-Sale	\$2,382,935	\$2,457,092
County Pool	387,669	411,844
State Pool	2,114	2,891
Gross Receipts	\$2,772,717	\$2,871,828
Cty/Cnty Share	(69,318)	(71,796)
Net Receipts	\$2,703,399	\$2,800,032
Less Triple Flip*	\$(675,850)	\$(700,008)
Measure S	\$1,450,107	\$1,462,387
Measure S	\$0	\$1,419,570

*Reimbursed from county compensation fund

Published by HdL Companies in Spring 2016

www.hdlcompanies.com | 888.861.0220



California Overall

Excluding accounting aberrations, local sales and use tax receipts from the fourth quarter of 2015 ended 2.6% above 2014's holiday quarter.

Solid returns for autos, RVs, building materials and most categories of restaurants were the primary contributors to the statewide increase. The growth in online shopping for merchandise shipped from out-of-state continued to raise countywide use tax allocation pool revenues.

The gains were largely offset by a 13.2% drop in tax receipts from service stations and other fuel-related expenditures. Except for value price clothing and shoes, most categories of general consumer goods were flat or down, reflecting heavy price discounting to reduce excess holiday inventories and the impact of the strong dollar on international tourist spending.

With some exceptions, particularly in the areas of computers and agricultural chemicals, overall receipts from business and industrial expenditures were also down primarily due to cutbacks in capital spending by energy producers and manufacturers of exported goods, equipment and raw materials.

Intense competition and price pressures resulted in only modest gains in receipts from grocers and pharmacists with the largest increase in this group coming from liquor stores and marijuana dispensaries.

HdL's most recent economic consensus forecast anticipates similar modest gains through 2016 with an eventual peak in auto sales replaced by strong sales of building and construction materials for home improvement and new housing. A recovery in tax receipts from fuel is not expected until the end of the year.

The Triple Flip Is Over!

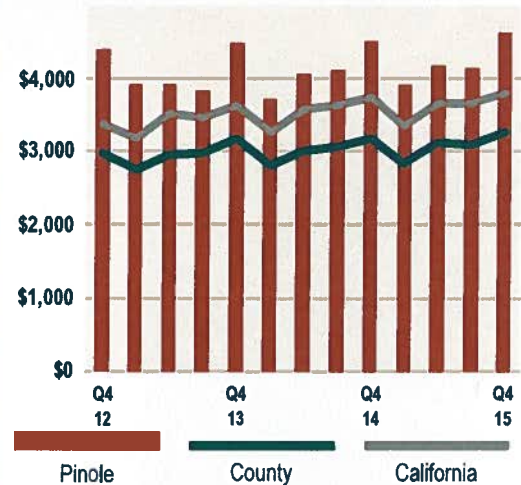
Beginning with taxes collected in January and forward, local governments will again receive their full share of Bradley-Burns sales and use tax reve-

nues thus ending an eleven-year program known as the Triple Flip.

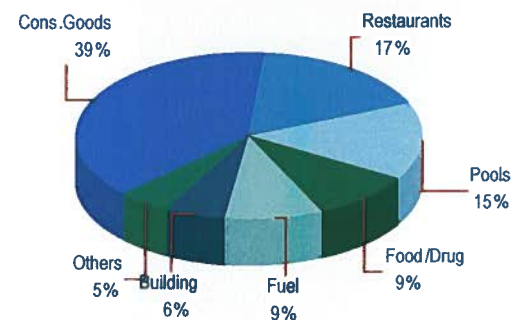
The program began in 2004 when voters approved a \$15 billion bond issue to cover operating deficits resulting from a combination of that year's economic downturn plus failure to offset the loss of revenue from the Governor's popular reduction in the 65-year-old, 2% Motor Vehicle In-Lieu Tax.

The State retained 25% of local sales tax to guarantee the bonds, reimbursed local governments from monies meant for schools and replaced the money taken from schools with state general funds thus creating what became known as the Triple Flip. The financing scheme resulted in interest payments totaling \$4.8 billion, plus another \$200 million in administrative fees while creating new budget challenges for local governments.

It also resulted in voter passage of constitutional amendment Proposition 1A that bars state tampering with local sales and use tax revenues in the future.

SALES PER CAPITA**REVENUE BY BUSINESS GROUP**

Pinole This Quarter

**PINOLE TOP 15 BUSINESS TYPES**

Business Type	Pinole		County	HdL State
	Q4 '15	Change	Change	Change
Automotive Supply Stores	22,450	14.1%	-6.3%	5.3%
Casual Dining	83,421	10.3%	6.9%	6.1%
Discount Dept Stores	— CONFIDENTIAL —		2.0%	3.0%
Drug Stores	16,745	-1.1%	1.7%	1.2%
Electronics/Appliance Stores	— CONFIDENTIAL —		4.0%	0.6%
Family Apparel	— CONFIDENTIAL —		4.8%	3.8%
Fast-Casual Restaurants	25,135	1.4%	0.1%	7.1%
Grocery Stores Beer/Wine	— CONFIDENTIAL —		1.0%	1.7%
Grocery Stores Liquor	— CONFIDENTIAL —		-1.1%	0.5%
Hardware Stores	— CONFIDENTIAL —		9.8%	8.5%
Liquor Stores	24,033	-2.8%	3.7%	4.8%
Lumber/Building Materials	— CONFIDENTIAL —		10.2%	10.1%
Quick-Service Restaurants	65,935	8.4%	7.3%	7.9%
Service Stations	93,758	-4.2%	-12.9%	-10.5%
Specialty Stores	67,493	1.0%	5.6%	4.3%
Total All Accounts	879,328	3.8%	3.8%	2.4%
County & State Pool Allocation	155,534	1.3%	1.3%	10.8%
Gross Receipts	1,034,861	3.4%	3.4%	3.5%
City/County Share	(25,872)	-3.4%		
Net Receipts	1,008,990	3.4%		

**Department of
Conservation and
Development**

30 Muir Road
Martinez, CA 94553

Phone: 1-855-323-2626

**Contra
Costa
County**



John Kopchik
Director

Aruna Bhat
Deputy Director

Jason Crapo
Deputy Director

Maureen Toms
Deputy Director

Kara Douglas
Assistant Deputy Director

Victoria Mejia
Business Operations Manager

June 1, 2016

To all parties interested in the Contra Costa County Fish and Wildlife Committee:

The Contra Costa County Internal Operations Committee of the Board of Supervisors is now accepting applications from individuals to fill one (1) At-large Alternate member seat on the Contra Costa County Fish and Wildlife Committee. Applications are due by July 1, 2016 at 5:00 P.M.

The Fish and Wildlife Committee has ten members: five District representatives nominated by individual members of the Board of Supervisors, four At-large positions and one Alternate At-large position nominated by the Internal Operations Committee. The Internal Operations Committee considers applications from all interested individuals and conducts interviews even when an existing At-large member seeks reappointment.

Fish and Wildlife Committee meetings are held on the third Wednesdays of each month from 3 to 5 p.m. For more information regarding the Fish and Wildlife Committee, please visit the Committee's website at: <http://www.co.contra-costa.ca.us/4317/Fish-Wildlife-Committee-FWC>. A fillable application is available on the website for your convenience.

Applicants must be a resident of Contra Costa County and submit an application by July 1, 2016 at 5:00 P.M. to the Clerk of the Board:

Address: Contra Costa County
Clerk of the Board
651 Pine Street
1st Floor, Room 106
Martinez, CA 94553

Fax: 925-335-1913
E-mail: clerkoftheboard@cob.cccounty.us

The Internal Operations Committee will review applications and interviews will be scheduled in July. If you have any questions please contact Maureen Parkes, staff to the Fish and Wildlife Committee, directly by phone at 925-674-7831 or email at maureen.parkes@dcd.cccounty.us.

Sincerely,

A handwritten signature in blue ink that reads "Maureen Parkes".

Maureen Parkes
Fish and Wildlife Committee Staff



Contra
Costa
County

For Office Use Only

Date Received:

For Reviewers Use Only:

Accepted

Rejected

BOARDS, COMMITTEES, AND COMMISSIONS APPLICATION

MAIL OR DELIVER TO:

Contra Costa County
CLERK OF THE BOARD

651 Pine Street, Rm. 106
Martinez, California 94553-1292

PLEASE TYPE OR PRINT IN INK

(Each Position Requires a Separate Application)

BOARD, COMMITTEE OR COMMISSION NAME AND SEAT TITLE YOU ARE APPLYING FOR:

PRINT EXACT NAME OF BOARD, COMMITTEE, OR COMMISSION

PRINT EXACT SEAT NAME (if applicable)

1. Name:
(Last Name) (First Name) (Middle Name)

2. Address:
(No.) (Street) (Apt.) (City) (State) (Zip Code)

3. Phones:
(Home No.) (Work No.) (Cell No.)

4. Email Address:

5. EDUCATION: Check appropriate box if you possess one of the following:

High School Diploma ☐ G.E.D. Certificate ☐ California High School Proficiency Certificate ☐

Give Highest Grade or Educational Level Achieved

Names of colleges / universities attended	Course of Study / Major	Degree Awarded	Units Completed		Degree Type	Date Degree Awarded
			Semester	Quarter		
A) <input type="text"/>	<input type="text"/>	Yes No <input type="checkbox"/> <input type="checkbox"/>	<input type="text"/>	<input type="text"/>	<input type="text"/>	<input type="text"/>
B) <input type="text"/>	<input type="text"/>	Yes No <input type="checkbox"/> <input type="checkbox"/>	<input type="text"/>	<input type="text"/>	<input type="text"/>	<input type="text"/>
C) <input type="text"/>	<input type="text"/>	Yes No <input type="checkbox"/> <input type="checkbox"/>	<input type="text"/>	<input type="text"/>	<input type="text"/>	<input type="text"/>
D) Other schools / training completed:	Course Studied	Hours Completed	Certificate Awarded: Yes No <input type="checkbox"/> <input type="checkbox"/>			
<input type="text"/>	<input type="text"/>	<input type="text"/>				

6. PLEASE FILL OUT THE FOLLOWING SECTION COMPLETELY. List experience that relates to the qualifications needed to serve on the local appointive body. Begin with your most recent experience. A resume or other supporting documentation may be attached but it may not be used as a substitute for completing this section.

<p>A) Dates (Month, Day, Year) <u>From</u> <u>To</u> <div style="display: flex; justify-content: space-around;"><div style="border: 1px solid black; width: 40px; height: 30px;"></div><div style="border: 1px solid black; width: 40px; height: 30px;"></div></div> <p>Total: <u>Yrs.</u> <u>Mos.</u> <div style="display: flex; justify-content: space-around;"><div style="border: 1px solid black; width: 40px; height: 30px;"></div><div style="border: 1px solid black; width: 40px; height: 30px;"></div></div> <p>Hrs. per week <div style="border: 1px solid black; width: 30px; height: 15px;"></div> . Volunteer <input type="checkbox"/></p> </p></p>	<p>Title</p> <div style="border: 1px solid black; height: 25px;"></div> <p>Employer's Name and Address</p> <div style="border: 1px solid black; height: 100px;"></div>	<p>Duties Performed</p> <div style="border: 1px solid black; height: 150px;"></div>
<p>B) Dates (Month, Day, Year) <u>From</u> <u>To</u> <div style="display: flex; justify-content: space-around;"><div style="border: 1px solid black; width: 40px; height: 30px;"></div><div style="border: 1px solid black; width: 40px; height: 30px;"></div></div> <p>Total: <u>Yrs.</u> <u>Mos.</u> <div style="display: flex; justify-content: space-around;"><div style="border: 1px solid black; width: 40px; height: 30px;"></div><div style="border: 1px solid black; width: 40px; height: 30px;"></div></div> <p>Hrs. per week <div style="border: 1px solid black; width: 30px; height: 15px;"></div> . Volunteer <input type="checkbox"/></p> </p></p>	<p>Title</p> <div style="border: 1px solid black; height: 25px;"></div> <p>Employer's Name and Address</p> <div style="border: 1px solid black; height: 100px;"></div>	<p>Duties Performed</p> <div style="border: 1px solid black; height: 150px;"></div>
<p>C) Dates (Month, Day, Year) <u>From</u> <u>To</u> <div style="display: flex; justify-content: space-around;"><div style="border: 1px solid black; width: 40px; height: 30px;"></div><div style="border: 1px solid black; width: 40px; height: 30px;"></div></div> <p>Total: <u>Yrs.</u> <u>Mos.</u> <div style="display: flex; justify-content: space-around;"><div style="border: 1px solid black; width: 40px; height: 30px;"></div><div style="border: 1px solid black; width: 40px; height: 30px;"></div></div> <p>Hrs. per week <div style="border: 1px solid black; width: 30px; height: 15px;"></div> . Volunteer <input type="checkbox"/></p> </p></p>	<p>Title</p> <div style="border: 1px solid black; height: 25px;"></div> <p>Employer's Name and Address</p> <div style="border: 1px solid black; height: 100px;"></div>	<p>Duties Performed</p> <div style="border: 1px solid black; height: 150px;"></div>
<p>D) Dates (Month, Day, Year) <u>From</u> <u>To</u> <div style="display: flex; justify-content: space-around;"><div style="border: 1px solid black; width: 40px; height: 30px;"></div><div style="border: 1px solid black; width: 40px; height: 30px;"></div></div> <p>Total: <u>Yrs.</u> <u>Mos.</u> <div style="display: flex; justify-content: space-around;"><div style="border: 1px solid black; width: 40px; height: 30px;"></div><div style="border: 1px solid black; width: 40px; height: 30px;"></div></div> <p>Hrs. per week <div style="border: 1px solid black; width: 30px; height: 15px;"></div> . Volunteer <input type="checkbox"/></p> </p></p>	<p>Title</p> <div style="border: 1px solid black; height: 25px;"></div> <p>Employer's Name and Address</p> <div style="border: 1px solid black; height: 100px;"></div>	<p>Duties Performed</p> <div style="border: 1px solid black; height: 150px;"></div>

7. How did you learn about this vacancy?

☐ CCC Homepage ☐ Walk-In ☐ Newspaper Advertisement ☐ District Supervisor ☐ Other

8. Do you have a Familial or Financial Relationship with a member of the Board of Supervisors? (Please see Board Resolution no. 2011/55, attached): No ☐ Yes ☐

If Yes, please identify the nature of the relationship:

9. Do you have any financial relationships with the County such as grants, contracts, or other economic relations?

No ☐ Yes ☐

If Yes, please identify the nature of the relationship:

I CERTIFY that the statements made by me in this application are true, complete, and correct to the best of my knowledge and belief, and are made in good faith. I acknowledge and understand that all information in this application is publically accessible. I understand and agree that misstatements / omissions of material fact may cause forfeiture of my rights to serve on a Board, Committee, or Commission in Contra Costa County.

Sign Name: _____ Date: _____

Important Information

1. This application is a public document and is subject to the California Public Records Act (CA Gov. Code §6250-6270).
2. Send the completed paper application to the Office of the Clerk of the Board at: **651 Pine Street, Room 106, Martinez, CA 94553.**
3. A résumé or other relevant information may be submitted with this application.
4. All members are required to take the following training: 1) The Brown Act, 2) The Better Government Ordinance, and 3) Ethics Training.
5. Members of boards, commissions, and committees may be required to: 1) file a Statement of Economic Interest Form also known as a Form 700, and 2) complete the State Ethics Training Course as required by AB 1234.
6. Advisory body meetings may be held in various locations and some locations may not be accessible by public transportation.
7. Meeting dates and times are subject to change and may occur up to two days per month.
8. Some boards, committees, or commissions may assign members to subcommittees or work groups which may require an additional commitment of time.

**THE BOARD OF SUPERVISORS OF CONTRA COSTA COUNTY, CALIFORNIA and for
Special Districts, Agencies and Authorities Governed by the Board Adopted Resolution
no. 2011/55 on 2/08/2011 as follows:**

IN THE MATTER OF ADOPTING A POLICY MAKING FAMILY MEMBERS OF THE BOARD OF SUPERVISORS INELIGIBLE FOR APPOINTMENT TO BOARDS, COMMITTEES OR COMMISSIONS FOR WHICH THE BOARD OF SUPERVISORS IS THE APPOINTING AUTHORITY

WHEREAS the Board of Supervisors wishes to avoid the reality or appearance of improper influence or favoritism;
NOW, THEREFORE, BE IT RESOLVED THAT the following policy is hereby adopted:

- I. SCOPE: This policy applies to appointments to any seats on boards, committees or commissions for which the Contra Costa County Board of Supervisors is the appointing authority.
- II. POLICY: A person will not be eligible for appointment if he/she is related to a Board of Supervisors' Member in any of the following relationships:
1. Mother, father, son, and daughter;
 2. Brother, sister, grandmother, grandfather, grandson, and granddaughter;
 3. Great-grandfather, great-grandmother, aunt, uncle, nephew, niece, great-grandson, and great-granddaughter;
 4. First cousin;
 5. Husband, wife, father-in-law, mother-in-law, son-in-law, daughter-in-law, stepson, and stepdaughter;
 6. Sister-in-law (brother's spouse or spouse's sister), brother-in-law (sister's spouse or spouse's brother), spouse's grandmother, spouse's grandfather, spouse's granddaughter, and spouse's grandson;
 7. Registered domestic partner, pursuant to California Family Code section 297.
 8. The relatives, as defined in 5 and 6 above, for a registered domestic partner.
 9. Any person with whom a Board Member shares a financial interest as defined in the Political Reform Act (Gov't Code §87103, Financial Interest), such as a business partner or business associate.



POLICE • COMMUNITY PARTNERSHIPS



NATIONAL NIGHT OUT 2016

One Community-One Event-One Location

TUESDAY, AUGUST 2, 2016

4PM-8PM

FERNANDEZ PARK

THE EVENT WILL INCLUDE:

**K9 Demonstration
DUI/Command Center
Crime Prevention
Traffic/Motor Unit**

**DJ-Music by Pistello
Bounce House
Snow Cones
Local Vendors**

We encourage everyone to bring your block party to Fernandez Park and join the Pinole Police Department in celebrating National Night Out!



CONTRA COSTA
**transportation
authority**

Dear Elected Officials and Business and Community Partners:

As you may know, the Contra Costa Transportation Authority (CCTA), the California Department of Transportation (Caltrans), the Metropolitan Transportation Commission, and the City of San Pablo recently broke ground on an interchange improvement project on Interstate 80 at San Pablo Dam Road.

To facilitate the next phase of work, we must temporarily close a section of the freeway in order to help ensure public and motorist safety.

What to Expect:

- Interstate 80 will be temporarily closed in the eastbound and westbound directions between San Pablo Avenue and San Pablo Dam Road
- The closure will occur from Saturday, June 18th at 11:00 p.m. until 7:00 a.m. Sunday, June 19th
- Temporary detours will be in effect (please see the detour maps on pages two and three of this document)
- Motorists should follow the instructions posted on all on-site signage

These closures will enable crews to grade (properly adjust and align) falsework recently constructed for a new pedestrian overcrossing at Riverside Avenue, which will replace the current overcrossing. When complete, the new overcrossing will extend across Amador Street, enhancing safety for Riverside Elementary School students and the community.

Thank you for your cooperation and patience during this important work.

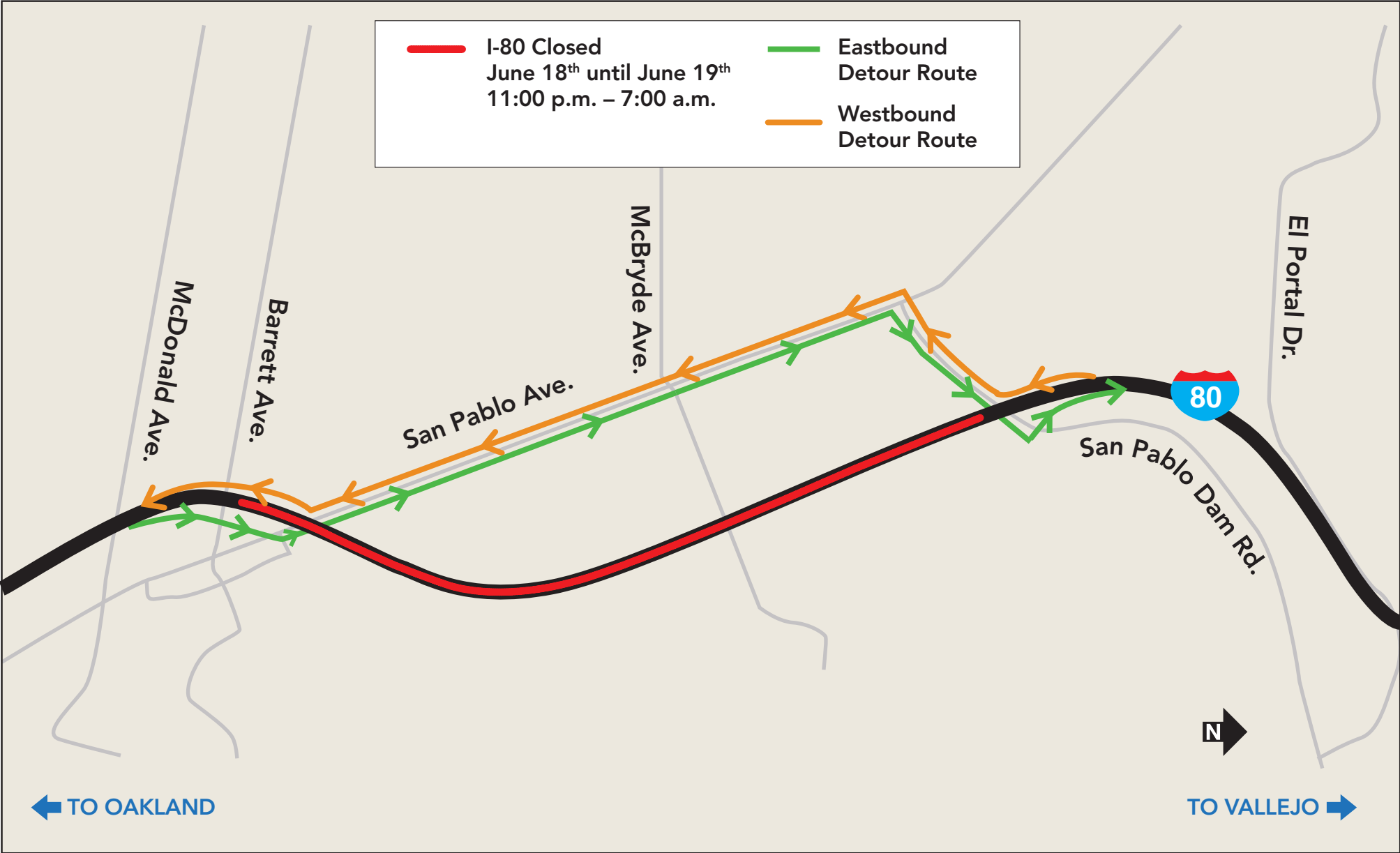
For more information, please visit <http://www.ccta.net/sanpablodamroad> or call the project hotline at (510) 277-0444. Construction updates will also be posted to Twitter at [@i80spdr](https://twitter.com/i80spdr).

We will keep you informed about future closures and other essential work to support construction as the project moves forward.

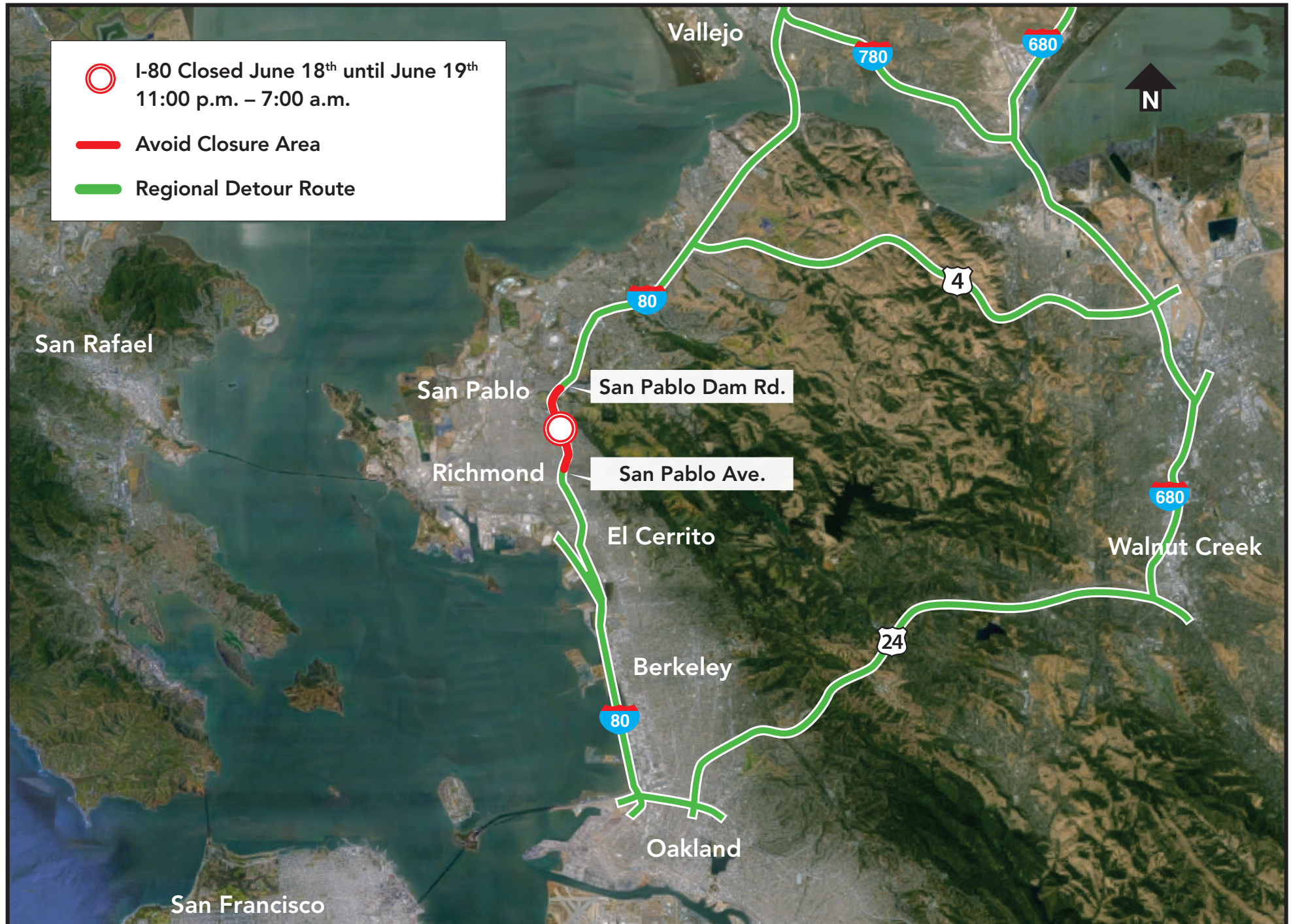
About the I-80/San Pablo Dam Road Interchange Reconstruction

The Interstate 80/San Pablo Dam Road interchange provides access between residential areas north and east of the interchange and Bay Area employment centers. The first phase of the project will relocate the El Portal Drive on-ramp to westbound I-80 to the north, extend the auxiliary lane along westbound I-80 between the San Pablo Dam Road off-ramp and the El Portal Drive on-ramp, and reconstruct the Riverside Avenue pedestrian overcrossing. The \$118.8 million project is being constructed by the Contra Costa Transportation Authority in partnership with Caltrans, the Metropolitan Transportation Commission, and the City of San Pablo. For more information, please visit <http://www.ccta.net/sanpablodamroad> or call the project hotline at (510) 277-0444.

Full Overnight Closure of I-80 at San Pablo Dam Road Local Detour Map



Full Overnight Closure of I-80 at San Pablo Dam Road Regional Detour Map



**CITY OF PINOLE RECREATION DEPARTMENT
SCHOOL OF PERFORMING ARTS
TEEN/COLLEGE MUSICALS COMPANY
PRESENTS**

THE 2016 SUMMER PRODUCTION OF

**LEGALLY
BLONDE**
The Musical

Based on the Metro-Goldwyn-Mayer Motion Picture

**DIRECTED AND CHOREOGRAPHED BY
ANJEE NORGAAARD-GALLIA
MUSICAL DIRECTION BY CHIE TREAGUS**

Vocal Direction by Leah Wilson

Set Design by Fernando Ochoa

Produced by Special Arrangements with Music Theatre International

**SUMMER PROGRAM IS OPEN TO PERFORMERS
AGES 14 THROUGH COLLEGE AGE.**

**REGISTRATION AND AUDITIONS AT THE FIRST SESSION
ON JUNE 20 from 1:00 p.m. – 4:00 p.m.**

**WORKSHOP MEETS WEEKDAYS: June 20 through July 22
FROM 1:00 – 4:00 P.M.**

Performances:

Friday, July 22 at 8:00 p.m.

Saturday, July 23 at 2:00 p.m. and 8:00 p.m.

Sunday, July 24 at 2:00 p.m.

PINOLE COMMUNITY PLAYHOUSE, 601 Tennent Avenue, Pinole k

Cost: Pinole Residents: \$100 Non-Residents: \$125

For more information: Call the director at 510-388-3262